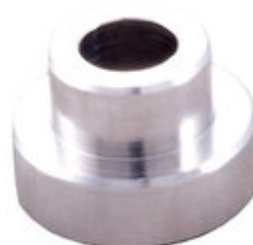


LOCK-N-LOAD COMPARATOR INSERT - 20 CALIBER BULLET COMPARATOR INSERT

[Reloading](#) > [Measuring Tools](#) > [Bullet Comparators](#)

The Stoney Point Chamber-All Bullet Comparator body attaches to the blade of your caliper with a small thumbscrew and utilizes inserts for each caliber. The design of this tool allows proper alignment when used with the stoney Point Chamber-All OAL gauge (offset position), or it can be used in a conventional centerline method. Inserts are sold separately, or the tool can be purchased with six inserts as a kit. The body can also be used with to hold the Stoney Point headspace gage inserts.



Attributes

- Name: [20 CALIBER BULLET COMPARATOR INSERT](#)
- Manufacturer: [HORNADY](#)
- Product no.: 749000516
- Mfr. No.: 1420
- Caliber: 20 Caliber (.204)
- Delivery weight: 0.032kg
- Shipping height: 15mm
- Shipping width: 41mm
- Shipping length: 74mm
- UPC: 090255704761

Item details

Made in USA

EU Export Disabled

Table of Contents

- [Startpage](#)
- [LOCKNLOAD COMPARATOR INSERT 20 CALIBER BULLET COMPARATOR INSERT Safety Instruction Guide](#)
- [About Us](#)

LOCKNLOAD COMPARATOR INSERT 20 CALIBER BULLET COMPARATOR INSERT Safety Instruction Guide

Introduction

Thank you for choosing the LOCKNLOAD COMPARATOR INSERT 20 CALIBER BULLET COMPARATOR INSERT. This product is designed to assist in measuring and comparing bullet lengths accurately. To ensure your safety and the proper use of this product, please read and follow these safety instructions carefully.

General Safety Guidelines

- Always use the product according to the manufacturer's instructions.
- Keep the product out of reach of children and vulnerable individuals.
- Regularly inspect the product for any signs of damage or wear before use.
- Do not use the product if it is damaged or malfunctioning.
- Report any unsafe products or accidents to the relevant authorities.
- Stay informed about product recalls and safety updates via the EU's Safety Gate platform.

Specific Safety Precautions for Use

- Ensure that the caliper is calibrated correctly before attaching the comparator insert.
- Avoid applying excessive force when using the thumbscrew to attach the comparator to the caliper.
- Do not use the comparator insert for any purpose other than its intended use.
- Handle the comparator and inserts with care to prevent any injury or accidents.
- Use the product in a welllit area to enhance visibility and accuracy during measurements.
- Store the product in a safe location when not in use to prevent accidental damage or misuse.

Instructions for Installation and Usage

1. Installation of the Comparator Insert:

- Locate the thumbscrew on the comparator body.
- Align the comparator body with the blade of your caliper.
- Secure the comparator body by tightening the thumbscrew gently. Ensure it is firmly attached but do not overtighten.

2. Using the Comparator Insert:

- Select the appropriate caliber insert for your measurements (sold separately).
- Insert the selected caliber insert into the comparator body.
- Align the bullet to be measured with the insert, ensuring proper positioning.
- Read the measurement from the caliper display.

3. Using with the Stoney Point ChamberAll OAL Gauge:

- When using with the Stoney Point ChamberAll OAL gauge, follow the same installation steps.
- Ensure the gauge is in the offset position for accurate readings.

4. Maintenance:

- Clean the comparator and inserts regularly to maintain accuracy.

- Store the product in a dry place to prevent rust or corrosion.

Disposal Instructions

- Dispose of the product in accordance with local regulations.
- Do not dispose of the product in household waste.
- If the product is damaged or no longer usable, check for any recycling options available in your area.

Contact Information for Further Support

For any safety inquiries or support related to the LOCKNLOAD COMPARATOR INSERT 20 CALIBER BULLET COMPARATOR INSERT, please reach out to the manufacturer or your local retailer for assistance. Ensure you have your product details handy for a more efficient response.

By following these guidelines, you can ensure safe and effective use of your LOCKNLOAD COMPARATOR INSERT 20 CALIBER BULLET COMPARATOR INSERT. Thank you for your attention to safety.

About Us

Brownells Deutschland

**Brownells Deutschland - Einer der größten Lieferanten für Waffenteile,
Büchsenmacherwerkzeug & Schießsportzubehör**

Lahnstraße 1
24539 Neumünster
Deutschland

www.brownells-deutschland.de